



# **GANDHI INSTITUTE OF TECHNOLOGY AND MANAGEMENT (GITAM)**

(Deemed to be University)

Visakhapatnam | Hyderabad | Bengaluru

## **Policy to create Multidisciplinary Units of Research on Translational Initiatives (MURTI)**

**Or**

**MURTI Policy**



**(An initiative of GITAM Deemed to be University)**

**Implementation Date: Academic Year 2023-24**

## Contents

1.	Background	1
2.	Purpose	2
3.	Organizational Scope	2
4.	Vibrant Workforce - MURTI Think Tank	2
5.	Funding	3
6.	Governance	3
7.	Self-Sustenance Plan	5
8.	Implementation	5

# 1. Background

## Multidisciplinary Unit of Research on Translational Initiatives (MURTI):

The Multidisciplinary Unit of Research on Translational Initiatives (MURTI) is a virtual entity embraced by GITAM, serving as a beacon of interdisciplinary research and innovation to bring about a positive change in the University's research culture. MURTI's main objective is to establish a cross-disciplinary think tank that brainstorms and proposes workable hypotheses or measures for issues of regional, national, and global relevance. These proposals will be tested by experienced work groups known as goal-oriented research clusters within a dynamic research ecosystem.

To achieve this, MURTI centres will be set up across all campuses of GITAM University. These centres will involve top-quality faculty from diverse disciplines, either from GITAM's talent pool or invited from established national/global institutions, who will be associated with MURTI. By bringing together researchers from various fields onto a common platform, MURTI aims to create an intellectually stimulating research environment, breaking away from the traditional approach of looking at problems solely through a single discipline.



**Figure 1: Framework of MURTI**

MURTI is committed to engaging in constant multidisciplinary research to develop innovative and sustainable solutions. MURTI's primary focus is on creating cross-disciplinary research hubs that engage in goal-oriented and time-bound translational initiatives. These hubs will be collaborative platforms where researchers, experts, and stakeholders from various fields work together on complex problems to find innovative solutions. The initiative encourages collaboration between experts from different fields, institutes, and regions, fostering a better understanding of different perspectives and approaches.

As part of this initiative, state-of-the-art labs and resources will be provided to empower faculty to conduct cutting-edge research. While these facilities mainly cater to MURTI-associated members, they are open to other faculty with compelling scientific questions. GITAM aims to create an ecosystem that encourages the convergence of ideas from diverse fields of study.

## 2. Purpose

To provide clear guidelines on MURTI think tank, funding, governance, and sustenance across the GITAM campuses.

## 3. Organizational Scope

This policy applies to all campuses of GITAM (Deemed to be University) except GIMSR.

## 4. Vibrant Workforce - MURTI Think Tank

### a. Distinguished Professors:

GITAM has traditionally been a teaching university established about four decades ago. To transform GITAM into a research university that can meet global standards, the university is implementing a policy to create MURTIs across all its campuses. The aim of creating MURTIs is to invite external globally renowned professors and high-performance GITAM professors as Distinguished Professors to work in a free and liberated environment without conventional bureaucratic practices and reporting systems. These professors are primarily associated with MURTIs while maintaining their professional affiliation with GITAM departments. They collaborate with existing mid and early-career faculty members to form research clusters. These clusters work on interdisciplinary and goal-oriented research projects that originate from brainstorming at the MURTI. **(Refer to the “Policy for Distinguished Professors” for more details).**

### b. MURTI Faculty Fellows:

GITAM values existing faculty's talent and research contributions, even though they are heavily involved in teaching. Therefore, GITAM invites such fellows, especially those in mid and early-career stages, to join MURTI if they have compelling research questions, a profound passion for conducting research, and a proven track record of excellence. The selection process for MURTI Faculty Fellows will be rigorous and thorough (see. Once selected, these fellows will be designated MURTI Faculty Fellows and allowed to work within the MURTI framework. They will have a reduced teaching load, enabling them to work in the MURTI ecosystem alongside Distinguished Professors. They will collaborate on goal-oriented research initiatives with potential real-world applications. **(Refer to the “Policy on Granting Autonomy to High-Performing Faculty Members” for more details).**

### c. MURTI Research Scholars:

Translation of ideas, originated through intense brainstorming of Distinguished Professors, MURTI Faculty Fellows, and others, can become a reality only when they have a dedicated and talented workforce. Therefore, GITAM aims to attract exceptional research scholars through GITAM Research Admissions Test (GReAT), who will collaborate closely with the MURTI Faculty Fellows and receive invaluable mentorship from the esteemed Distinguished Professors. Through this mentorship, research scholars will have the opportunity to refine their research methodologies, develop critical thinking skills, and gain a deep understanding of the intricacies of their chosen disciplines.

The dedicated and talented workforce that GITAM aspires to assemble will drive the successful implementation of MURTI, where innovative ideas leading to transformative solutions that positively impact society will be nurtured.

## 5. Funding

### a. GITAM Research Ignition Grant (GRIG):

The MURTI-associated faculty members are granted access to the GITAM Research Ignition Grant (GRIG). This grant provides financial assistance and resources to the members, empowering them to initiate and pursue their research projects. The goal of the GITAM Research Ignition Grant is to stimulate transformative research endeavors that can have a significant impact at both national and global levels. Faculty members can utilize this grant to hire human resources, acquire consumables, small equipment, attend conferences, and cover other permissible expenses related to their research plans.

Distinguished Professors and MURTI Faculty Fellows are allotted an initial grant of up to 5 Lakhs each. For any ask of funding greater than 5 Lakhs, the respective faculty member or a group of faculties have to apply to the University Research Council.

The availability of this fund can be renewed based on performance evaluation and recommendations from a panel appointed by the Vice-Chancellor. Through the GITAM Research Ignition Grant, the university reaffirms its commitment to fostering a dynamic research ecosystem.

### b. MURTI-Excellence Fellowships:

Candidates who have achieved outstanding ranks in the GITAM Research Admissions Test (GReAT) will be offered the research fellowships called “MURTI Excellence Fellowship (MEF).” Each year 25 fellowships will be awarded to the top rankers of GReAT, and each fellowship is entitled to receive a fellowship amount of INR 40,000. GITAM will also award seventy-five MURTI Junior Research Fellowships (MJRF) of INR 25,000 per month to the students securing top rank in GReAT exam. The MURTI Excellence Fellowship Scholars and MURTI Junior Research Fellowship Scholars will work under the supervision of a faculty member, and their progress evaluation and recommendation for continuation will be monitored/ assessed by the Doctoral Advisory Committee, constituted as per the Ph.D. Admissions Regulations updated regularly.

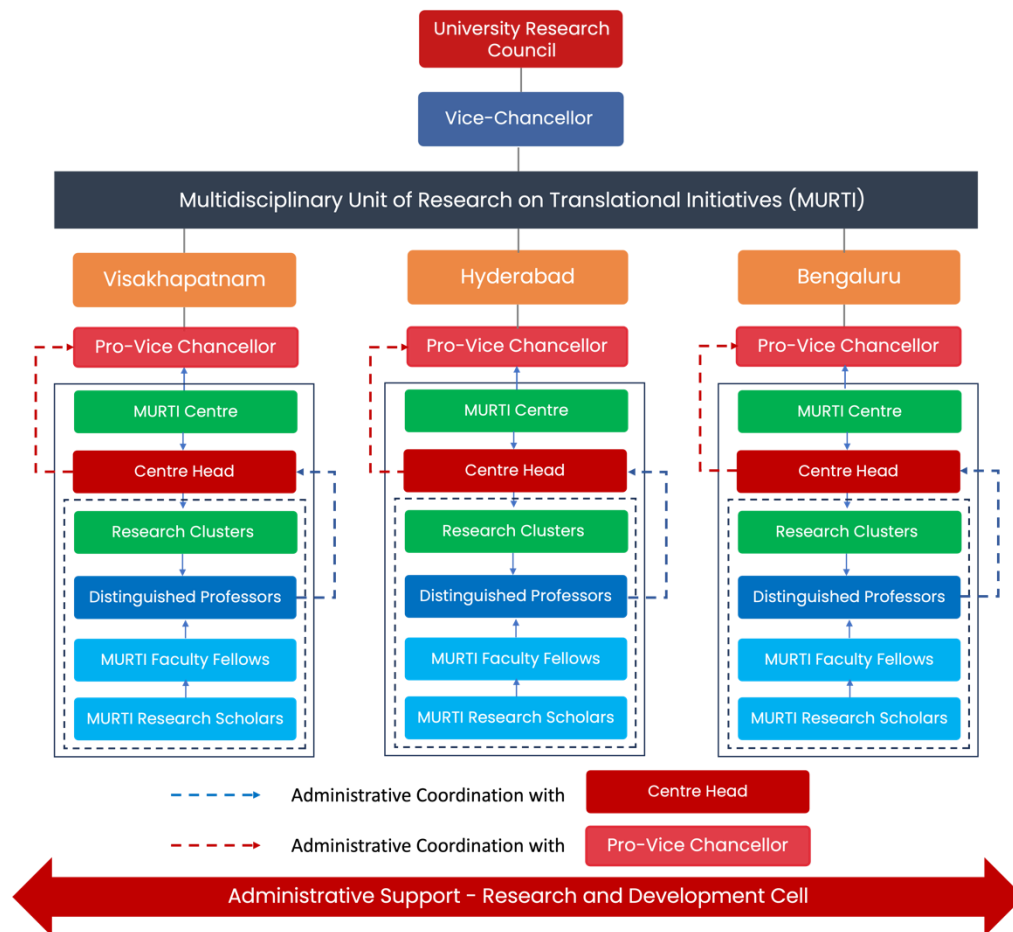
## 6. Governance

The governance of MURTI will follow a structured framework that ensures effective management and decision-making processes. The key components of MURTI's governance are as follows:

- a. **University Research Council:** MURTI is guided by the University Research Council, comprised of eminent scholars, researchers, and experts from various fields. The council provides the Vice-Chancellor strategic guidance and advice on MURTI's overall direction, goals, and initiatives. They contribute their expertise and insights to shape the research agenda and ensure the relevance and impact of MURTI's activities.
- b. **Centre Head:** Each MURTI Centre will be headed by a Centre Head who will oversee the unit's day-to-day operations and functioning. The Centre Head will be selected by the Vice-Chancellor through a selection panel. The Centre Head will play a crucial role in coordinating research activities, managing resources, fostering collaborations with internal and external stakeholders,

and implementing the decisions and recommendations of the University Research Council. The Centre Heads will report to the Vice-Chancellor academically and coordinate with the respective campus Pro-Vice-Chancellors for any administrative matters.

- c. **Research Clusters:** MURTI operates through goal-oriented research clusters, which are specialized groups focused on specific research areas or themes. These clusters consist of MURTI Faculty Fellows, and MURTI Research Scholars from different disciplines who come together to work on interdisciplinary research projects. Each cluster is led by a Distinguished Professor or a MURTI Faculty Fellow, as deemed fit, who facilitates collaboration, coordinates research efforts, and ensures the achievement of cluster goals.
- d. **Administrative Support:** MURTI will receive administrative support from the Research and Development Cell (RDC) of GITAM, which provides the necessary infrastructure, resources, and operational assistance for the smooth functioning of the unit. Research and Development Cell shall assist in managing budgets, organizing events, coordinating collaborations, and facilitating communication among stakeholders.
- e. **Funding and Resource Management:** MURTI secures funding through various sources, including government grants, research partnerships, and external funding agencies. The unit ensures transparent and efficient resource management, allocating funds to support research projects, infrastructure development, capacity-building activities, and other essential requirements.



**Figure 2: Governance Structure of MURTI**

## 7. Self-Sustenance Plan

GITAM aspires to create a sustainable research ecosystem across all campuses. During the initial years, all MURTI members should utilize GITAM Research Ignition Grant (GRIG) resources to achieve the following goals:

- i) enhance the research output in terms of publishing quality research work,
- ii) enhance the brand image of GITAM by carving a niche in the global research map,
- iii) strive to generate research funds that sustain research activities.

The members shall aim to generate revenue to support the research activities as listed below:

- a. **Extramural Funding Acquisition:** It is essential for the members to actively pursue and secure external grants from government funding agencies, private foundations, industry sponsors, and international research collaborations. They should continuously look for opportunities to apply for competitive grants that align with the research focus areas of the centre.
- b. **Contract Research and Consultancy:** The members can generate additional revenue by getting involved in contract research projects and offering consultancy services to industry partners and organizations. This involves leveraging the expertise of all MURTI members to offer specialized solutions and research-based insights to address specific challenges or meet industry needs.
- c. **Fee-Based Services:** GITAM will provide MURTI laboratory facilities, specialized research equipment, and data analysis services on a fee-based arrangement. These services will be available to internal university departments and external stakeholders, including other research institutions or industry partners. They can request specific research support through the ISTEM portal.

## 8. Implementation

The policy implementation shall start from the academic year 2023-24. This policy will keep evolving every year or as deemed fit by the leadership team of GITAM.

\*\*\*\*\*